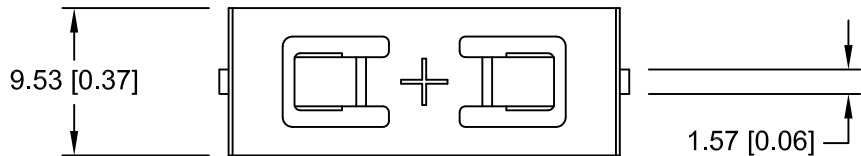
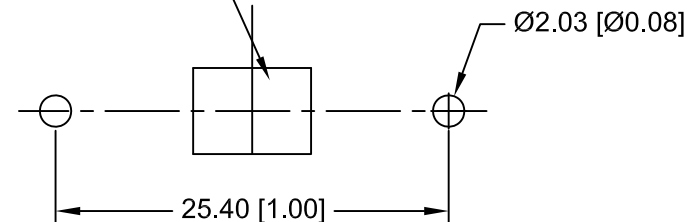
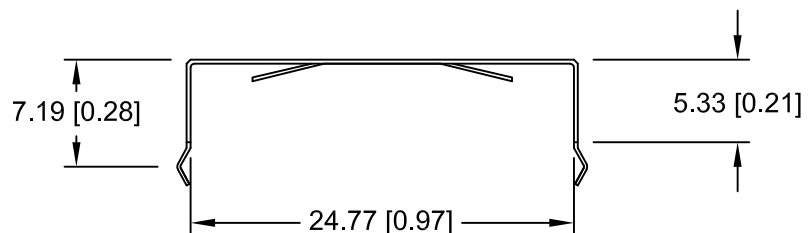


Date	SYM	REVISION RECORD	AUTH	DR.	CK.
08/12/16	A	DIM. 9.52 WAS 8.26 DIM. 1.62 WAS 1.40 CHANGED DIRECTION OF POSITIVE CONTACT TABS	T.B.	B.S.	
08/22/16	B	UPDATED NOTE FOR NEGATIVE CONTACT	T.B.	B.S.	
09/02/16	C	ADDED WEIGHT OF THE PART	T.B.	B.S.	
12/09/16	D	ADDED TABLE OF BATTERIES	T.B.	B.S.	



NEGATIVE CONTACT PAD  
NICKEL OR GOLD PLATED  
RECOMMENDED




PCB LAYOUT

NOTES:

- MATERIAL:  
0.25mm PHOSPHOR BRONZE, NICKEL PLATED.  
Weight: 0.65gram
- ROHS 2 COMPLIANT

CELL SIZE	RETAINS BATTERY NUMBERS
24mm	BR2450, CR2450, DL2450, LIR2450

Tolerance (Except as noted)	 <b>Memory Protection Devices, Inc</b> 200 Broad Hollow Road, Farmingdale, New York 11735	Scale	Drawn By B.S.
			Approved By T.B.
decimal ±.5 (.020)	Title CR2450 BATTERY STRAP, PC		
Fractional ± .8 (.030)	Date 12/09/16	Drawing Number BC-2007	
Angular ± 3°			